

Copilot for Microsoft 365

A Technical Guide



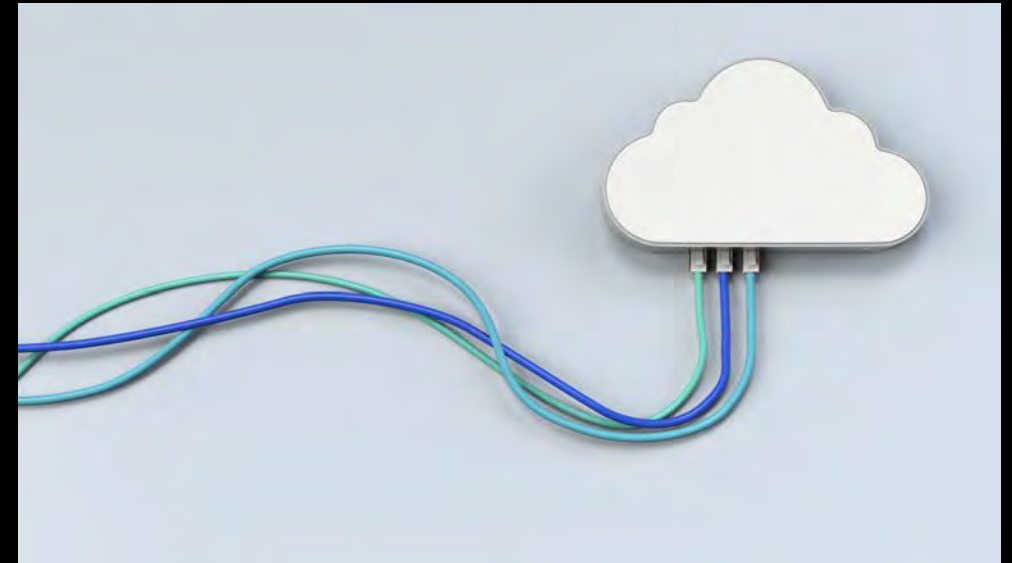


Agenda

- Title Slide
- Introduction to Copilot for Microsoft 365
- Maximizing Value with Copilot for Microsoft 365
- Key Capabilities of Copilot for Microsoft 365
 - Insights
 - Recommendations
 - Actions
 - Monitoring
 - Troubleshooting and Support
- Conclusion

Introduction to Copilot for Microsoft 365

- Optimize Microsoft 365 Environment
 - Gain insights and recommendations for improvement
 - Enhance security, compliance, and productivity
- Cost Efficiency and Health Monitoring
 - Actions to reduce costs and monitor system health
 - Troubleshoot issues effectively
- Support and Resources Access
 - Utilize support resources for Microsoft 365



Maximizing Value with Copilot for Microsoft 365

- Enhanced Security
 - Identifies and resolves vulnerabilities
 - Addresses misconfigurations and threats
- Regulatory Compliance
 - Assesses and manages compliance posture
 - Enforces policies and controls
- Productivity and Collaboration
 - Optimizes Microsoft 365 usage and adoption
 - Improves user satisfaction
- Cost Optimization
 - Analyzes Microsoft 365 spending
 - Optimizes licensing and inventory



Key Capabilities of Copilot for Microsoft 365: Insights

- Insights Capability
 - Access data-driven insights
 - Understand Microsoft 365 environment
 - Learn best practices for optimal performance



Key Capabilities of Copilot for Microsoft 365: Recommendations

- Personalized Microsoft 365 Recommendations
 - Security enhancements for data protection
 - Compliance adjustments for legal adherence
 - Productivity tips for efficient workflows
 - Cost efficiency strategies to optimize spending



Key Capabilities of Copilot for Microsoft 365: Actions



Direct Actions with Copilot

Implement recommendations effortlessly
Achieve outcomes without leaving Copilot



Seamless Integration

Enhance productivity using Microsoft tools
Streamline processes across services

Key Capabilities of Copilot for Microsoft 365: Monitoring



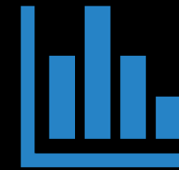
Service Health Monitoring

Check real-time service availability
Track ongoing incidents and updates



Performance Alerts

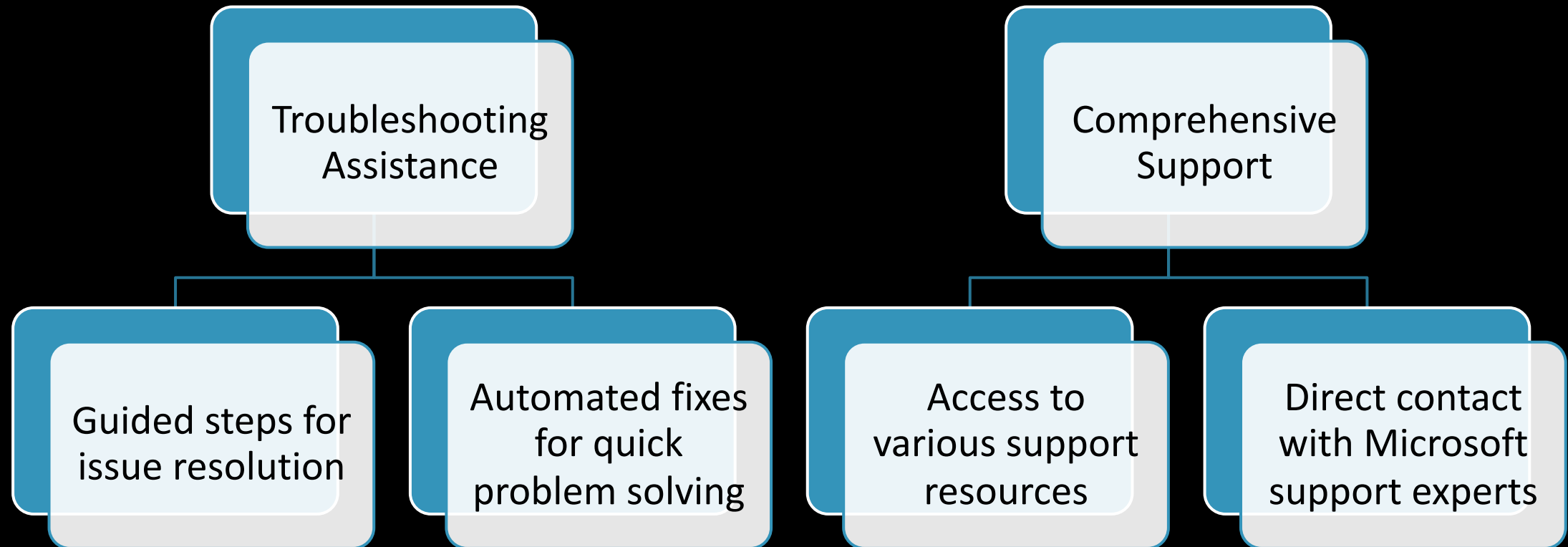
Receive notifications for
performance issues
Set custom alerts for specific services



Comprehensive Dashboard

View overall system health at a
glance
Access detailed reports for in-depth
analysis

Key Capabilities of Copilot for Microsoft 365: Troubleshooting and Support



Conclusion

- Enhanced Security and Risk Management
 - Identify and resolve vulnerabilities and threats
 - Ensure regulatory and organizational compliance
- Increased Productivity and Collaboration
 - Optimize Microsoft 365 usage and user satisfaction
- Cost Efficiency and Resource Optimization
 - Analyze and optimize Microsoft 365 spending and licensing
- Comprehensive Capabilities of Copilot
 - Access insights and best practices for Microsoft 365
 - Receive personalized recommendations for improvement
 - Implement actions and monitor Microsoft 365 health
 - Troubleshoot with guided steps and automated fixes